

Machining



DMG MORI NT5400/1800SY PRODUCTION MILLING MACHINE
5 axis mill-turn with lower turret
X: 40.9"/1,040mm Y: 10"/255mm Z: 76.4"/1,940mm



DMG MORI DURAVERICAL 5100 PRODUCTION MILLING MACHINE
3 Axis vertical
X: 17.7"/450mm Y: 3.94"/100mm Z: 51.2"/1,301mm



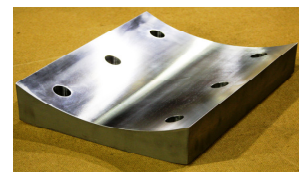
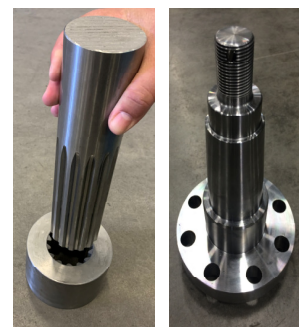
DMG MORI NHX6300 PRODUCTION MILLING MACHINE
4 axis horizontal machining center
X: 41.3"/1,050mm Y: 35.4"/900 mm Z: 40.6"/1,030mm



DMG MORI NLX 2500/700SY PRODUCTION MILL TURN
4 axis machining center and 48" bar feeder
X: 10.2"/260mm Y: 31.3"/795mm Z: 28.6"/728mm



DMG MORI CTX BETA 1250TC MILL TURN
5 axis and 60" bar feeder
X: 17.7"/450mm Y: 3.94"/100mm Z: 51.2"/1,301mm



Machining Capabilities			Max travel			Through spindle		Raw material		Barfeed / max L ¹	Removable side
			X	Y	Z	Main	Sub	Max L	Max D		
M1001	Mill, 3 ax.	OKK 40	36.0	25.0	12.0						Yes
M1003	Lathe, 2 ax.	Takasawa TC4	15.9		37.5	3.25		48.0	24.0		
M1004	Turn/mill, 5 ax.	CTX 1250TC	17.7	7.8	51.2	3.00	2.00	47.0	15.4	Yes / 60"	
M1005	Mill, 4 ax.	NHX6300	41.3	35.4	40.6			51.1	41.3		
M1006	Turn/mill, 4 ax.	NLX2500	10.2	3.9	31.3	3.00	1.9 ⁵	28.6	3.00	Yes / 48"	
M1007	Mill, 3 ax.	DV 5100	41.5	20.9	20.1						Yes
M1008	Turn/mill, 5 ax.	NT5400	40.9	10.0	76.4	4.20	4.20	75.6	36.2		
M1009	Mill, 3 ax.	SMV1370	53.0	27.0	24.0						Yes
Manual lathe						4.00		120.0	36.0		
Simplon Mill			48.0	16.0	16.0						
Manual mill			37.0	27.0	24.0						
Turret drill			20.0	12.5	24.0						